



# LACC

LOS ANGELES CITY COLLEGE

## Theater Arts

# Replacement Building

Los Angeles Community College District



8.17.20



# Schedule Overview

## Project Timeline

### *Task 1: Demolish old Cafeteria Building and create building-ready site*

- Demolition Documents: 2<sup>nd</sup> Quarter 2020
- Construction Commences: 2<sup>nd</sup> Quarter 2021

### *Task 2: New Theater Arts Replacement Building/ Demolish existing Theater Arts Building*

- Preliminary Package submittal to the State: 1<sup>st</sup> Quarter 2020
- Working Drawing Package submittal to the State: 1st Quarter 2021
- Projected DSA Approval: 4<sup>th</sup> Quarter 2021
- Construction Start: 2<sup>nd</sup> Quarter 2022

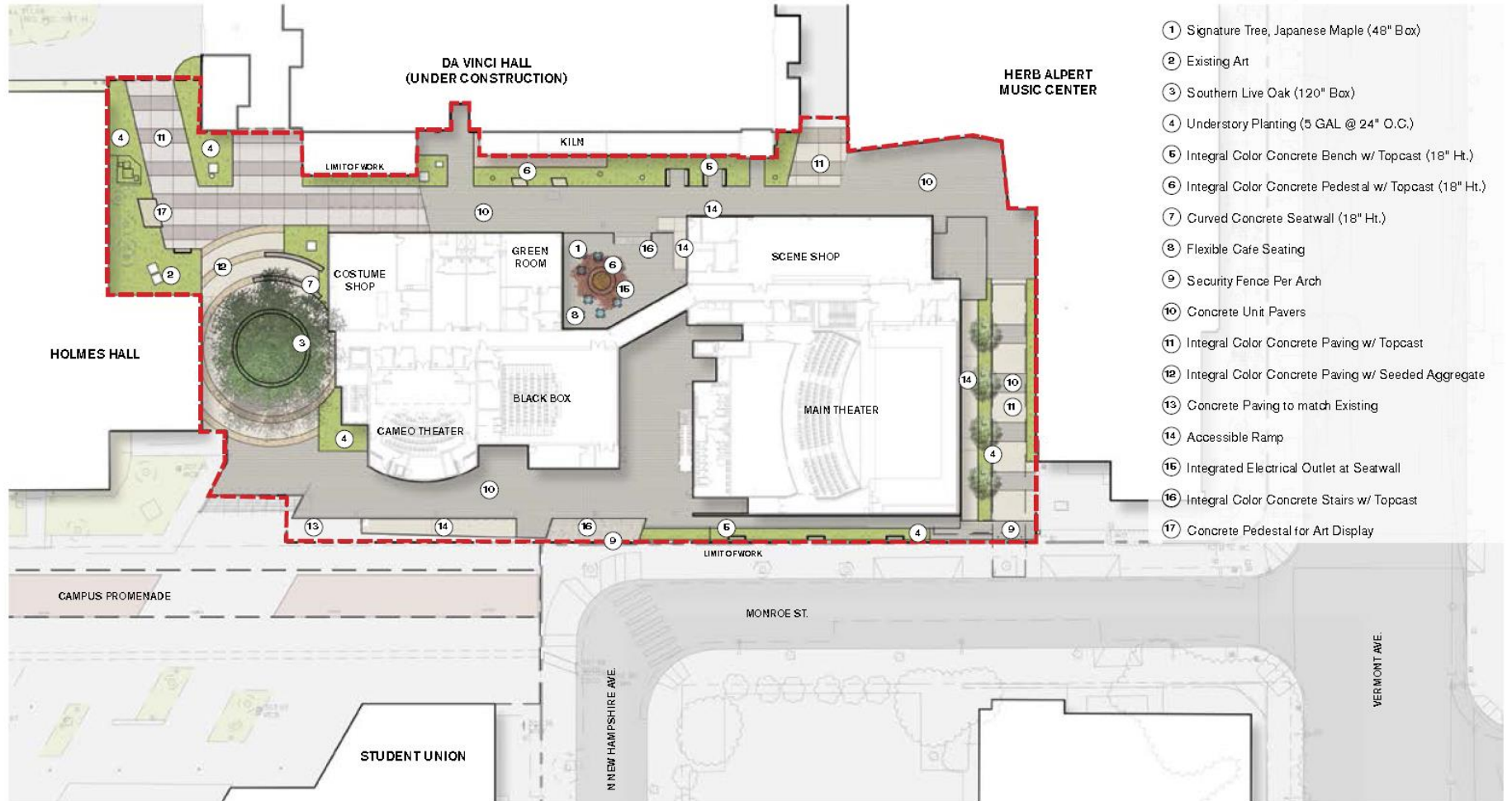
### *Task 3: New Landscaped Quad*

- Begin Design: 1<sup>ST</sup> Quarter 2020
- Construction Document completion: 2<sup>nd</sup> Quarter 2020
- Projected DSA Approval: 4<sup>th</sup> Quarter 2020
- Construction Commences: 1<sup>st</sup> Quarter 2023

### New Theater Arts Building & Legacy Quadrangle / Site Context Diagram

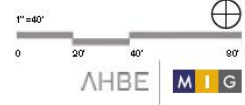


Landscape Concept Plan / New Theater Arts Building



- ① Signature Tree, Japanese Maple (48" Box)
- ② Existing Art
- ③ Southern Live Oak (120" Box)
- ④ Understory Planting (5 GAL @ 24" O.C.)
- ⑤ Integral Color Concrete Bench w/ Topcast (18" Ht.)
- ⑥ Integral Color Concrete Pedestal w/ Topcast (18" Ht.)
- ⑦ Curved Concrete Seatwall (18" Ht.)
- ⑧ Flexible Cafe Seating
- ⑨ Security Fence Per Arch
- ⑩ Concrete Unit Pavers
- ⑪ Integral Color Concrete Paving w/ Topcast
- ⑫ Integral Color Concrete Paving w/ Seeded Aggregate
- ⑬ Concrete Paving to match Existing
- ⑭ Accessible Ramp
- ⑮ Integrated Electrical Outlet at Seatwall
- ⑯ Integral Color Concrete Stairs w/ Topcast
- ⑰ Concrete Pedestal for Art Display

**Note:**  
Drip irrigation will be used at planting areas. Specified understory plant material in this space, with the exception of screening plants, will grow no taller than 30" tall at maturity to ensure clear, unobstructed visual corridors below the tree canopies.



New Theater Arts Building / Oration toward Legacy Quad



Landscape Concept Plan / New Legacy Quadrangle



- ① Southern Live Oak (36" Box)
- ② Southern Live Oak (60" Box)
- ③ California Fan Palm (25' BTH)
- ④ Understory Planting (5 GAL @ 24" O.C.)
- ⑤ Concrete Bench (18" Ht.)
- ⑥ Concrete Unit Pavers
- ⑦ Integral Color Concrete Paving w/ Topcast
- ⑧ Concrete Paving to match Existing
- ⑨ Flexible Sod Lawn
- ⑩ Performance Platform
- ⊙ Existing Tree to Remain, Protect in Place

**Note:**  
 Drip irrigation will be used at planting areas. Specified understory plant material in this space, with the exception of screening plants, will grow no taller than 30" tall at maturity to ensure clear, unobstructed visual corridors below the tree canopies.



New Legacy Quadrangle / View toward South



New Legacy Quadrangle / Existing Campus Promenade





New Legacy Quadrangle / West Promenade



New Theater Arts Building & Legacy Quadrangle / Plant Palette / Trees



*Acer palmatum 'Bloodgood'* / Japanese Maple



*Parkinsonia x 'Desert Museum'* / Desert Museum Palo Verde



*Quercus virginiana* / Southern Live Oak



*Washingtonia filifera* / California Fan Palm

New Theater Arts Building & Legacy Quadrangle / Plant Palette / Shrubs and Ground Covers



*Aloe 'Blue Elf' / Blue elf aloe*



*Aloe vera / Medicinal aloe*



*Calandrina spectabilis / Rock purslane*



*Callistemon viminalis 'Little John' / Dwarf callistemon*



*Callistemon Viminalis 'Slim' / Slim callistemon*



*Cotyledon 'Long Fingers' / Long fingers*



*Dasylirion Wheelerii / Desert spoon*



*Hesperaloe parvifolia 'Brake Lights' / Brake lights hesperaloe*



*Juniperus scopulorum 'Blue Arrow' / Blue arrow juniper*



*Lantana camara 'Dwarf Pink' / Dwarf pink lantana*



*Leonotis leonurus / Lion's tail*



*Raphiolepis indica 'Pinkie' / Pinkie indian hawthorn*

New Theater Arts Building & Legacy Quadrangle / Landscape Materials



Concrete Paving - Natural Gray



Concrete Paving - Integral Color



Concrete Pavers



Concrete Platforms for Art Display

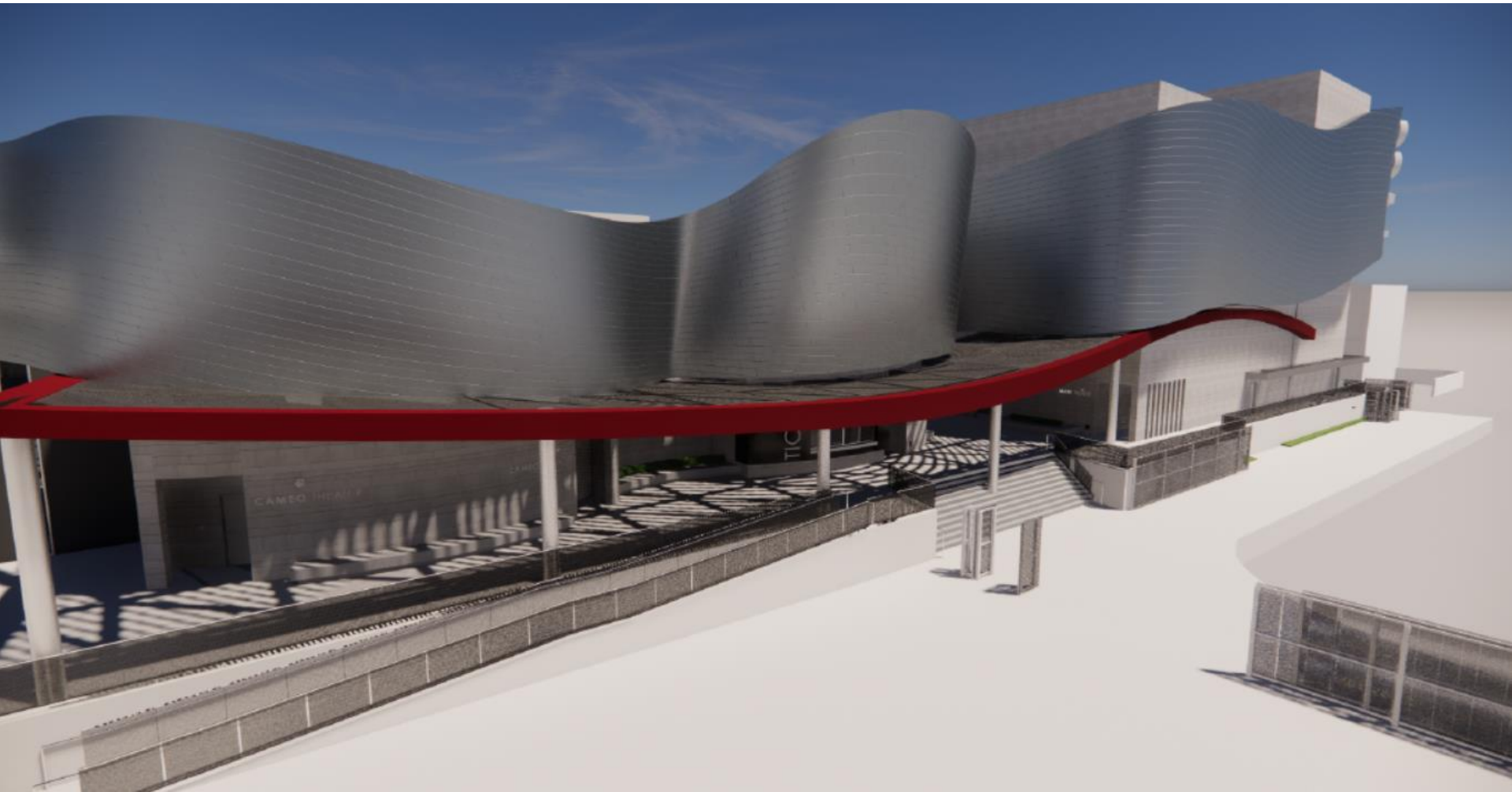


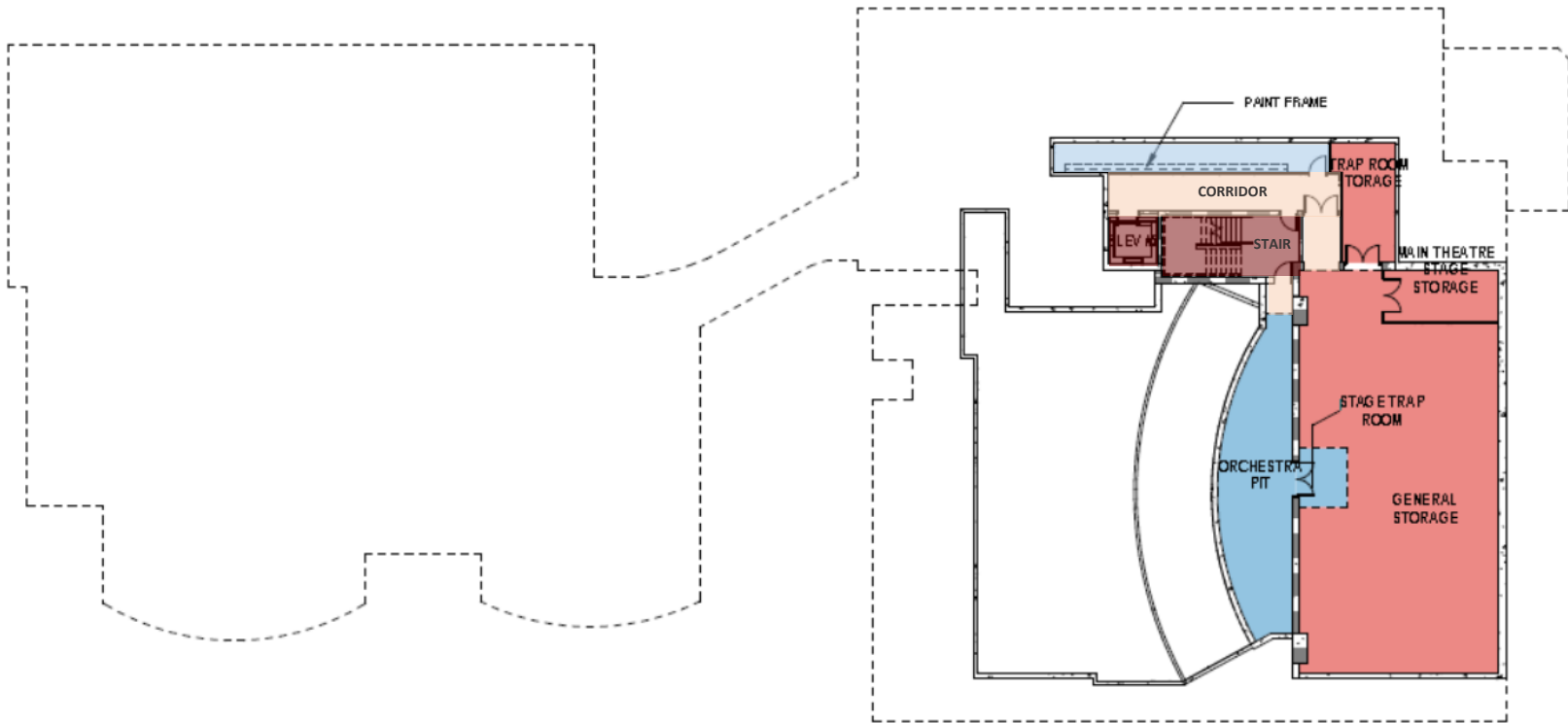
Concrete Seatwall (18" Ht.)



Boulders





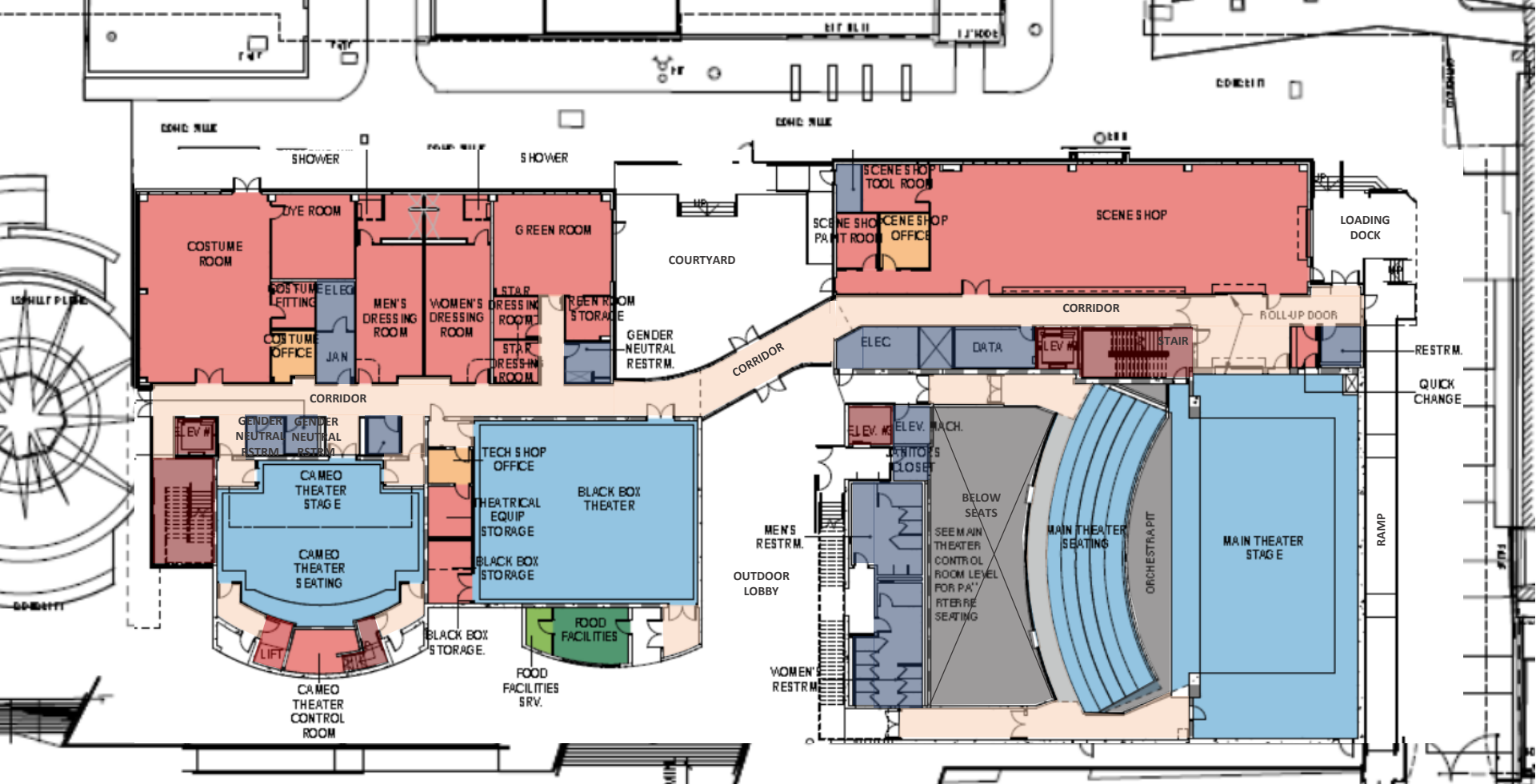


Elevation below Finished Floor -9'-9"

ROOM TYPE	TOP CODE	JCAF 31 TOP Code Name	AREA
ASSEMBLY	1007	DRAMATIC ARTS	728 SF
ASSEMBLY SERVICE	1007	DRAMATIC ARTS	2,706 SF
<b>Grandtotal</b>			<b>3,434 SF</b>

**THEATER ARTS - JCAF 31 BASEMENT LEVEL (F.E.E. -9'-9")**





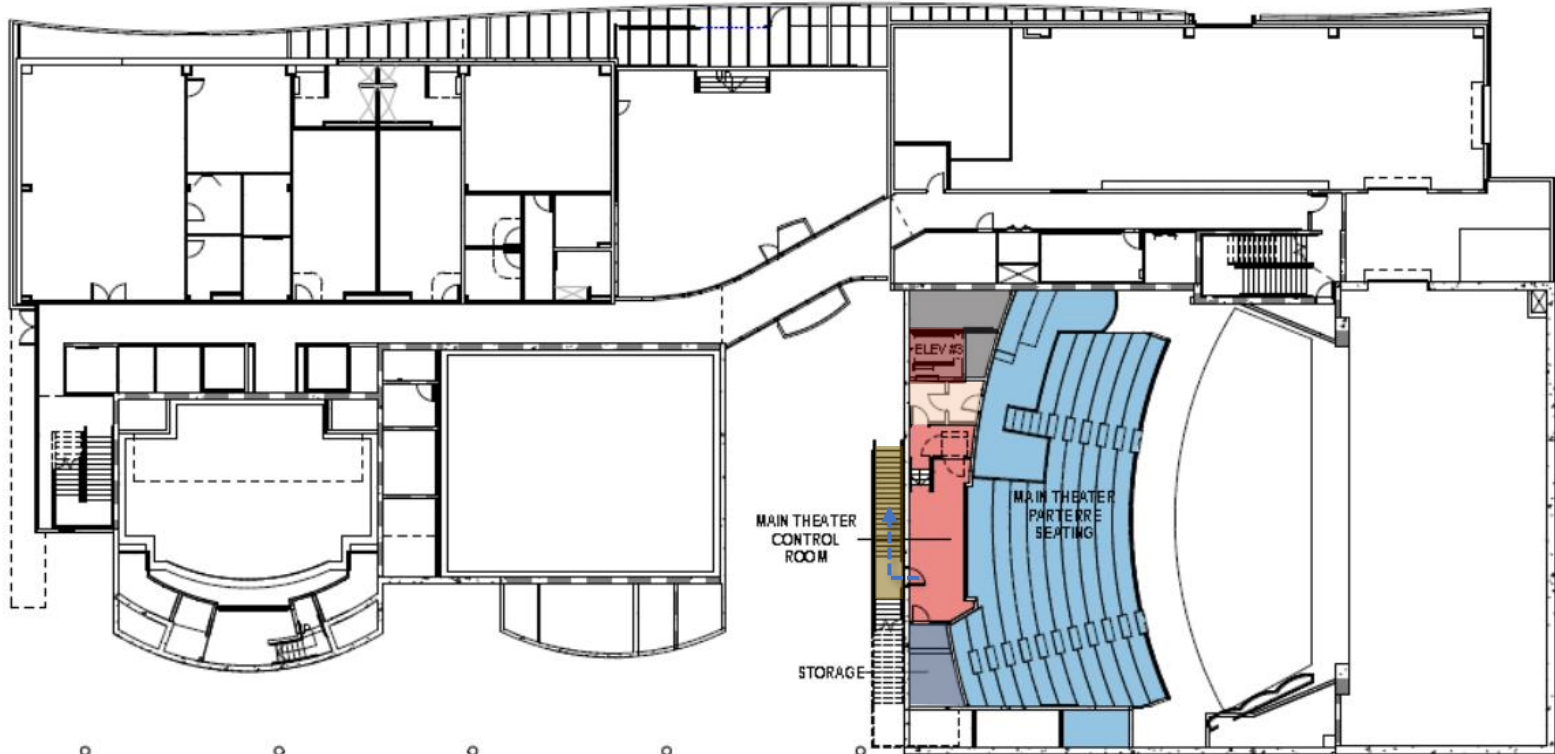
Finished Floor Elevation 0'-0"

ROOM TYPE      CODE      Code Name      AREA

OFFICE	1007	DRAMATIC ARTS	297 SF
ASSEMBLY	1007	DRAMATIC ARTS	7,900 SF
ASSEMBLY SERVICE	1007	DRAMATIC ARTS	6,721 SF
FOOD FACILITIES	6940	FOOD FACILITIES	195 SF
FOOD FACILITIES SERVICES	6940	FOOD FACILITIES	53 SF
<b>Grand Total</b>			<b>15,265 SF</b>

**THEATER ARTS - JCAF 31 1ST FLOOR LEVEL (F.E.E. 0'-0")**

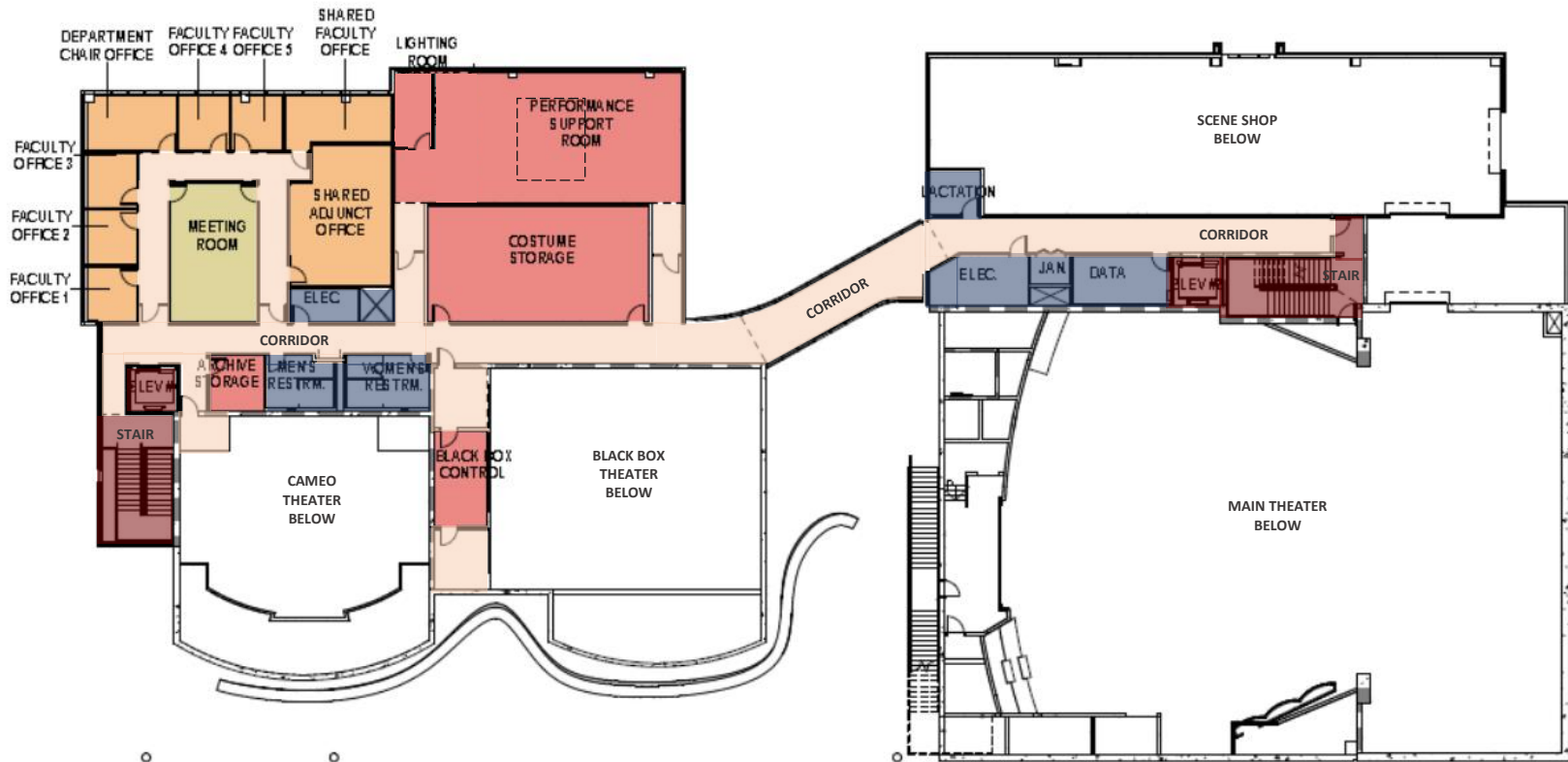




Finished Floor Elevation 12'-0"

ROOM TYPE	TOP CODE	JCAF 31 TOP Code Name	AREA
610 ASSEMBLY	1007	DRAMATIC ARTS	2,201 SF
615 ASSEMBLY SERVICE	1007	DRAMATIC ARTS	332 SF
Grand total			2,533 SF

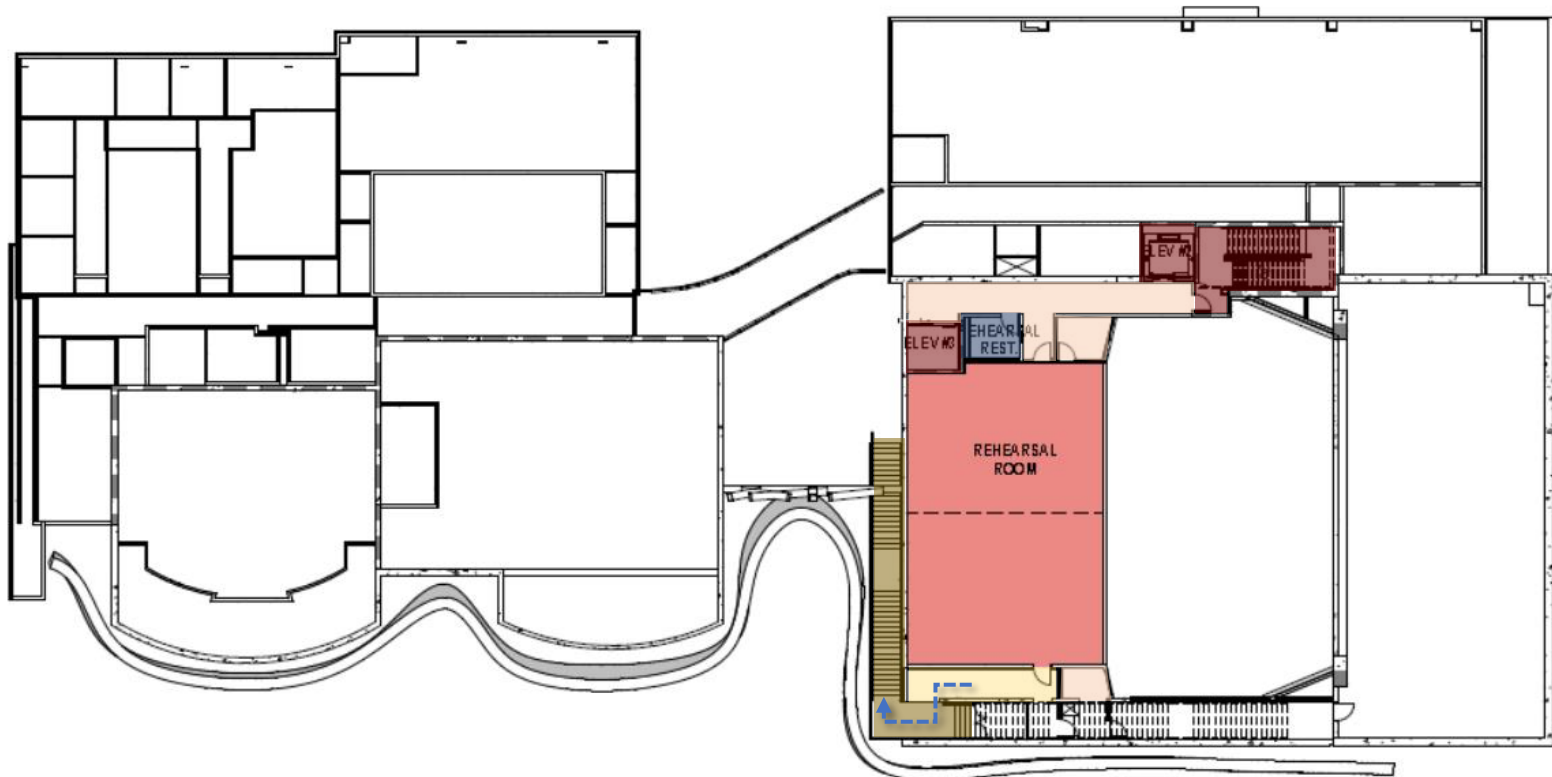
## THEATER ARTS - JCAF 31 MAIN THEATER CONTROL ROOM LEVEL (F.E.E. 12'-0")



Finished Floor Elevation 15'-0"

ROOM TYPE	TOP CODE	JCAF 31 TOP Code Name	AREA
310 OFFICE	1007	DRAMATIC ARTS	1,224 SF
615 ASSEMBLY'S SERVICE	1007	DRAMATIC ARTS	2,301 SF
600 MEETING ROOM	1007	DRAMATIC ARTS	398 SF
<b>Grandtotal</b>			<b>3,918 SF</b>

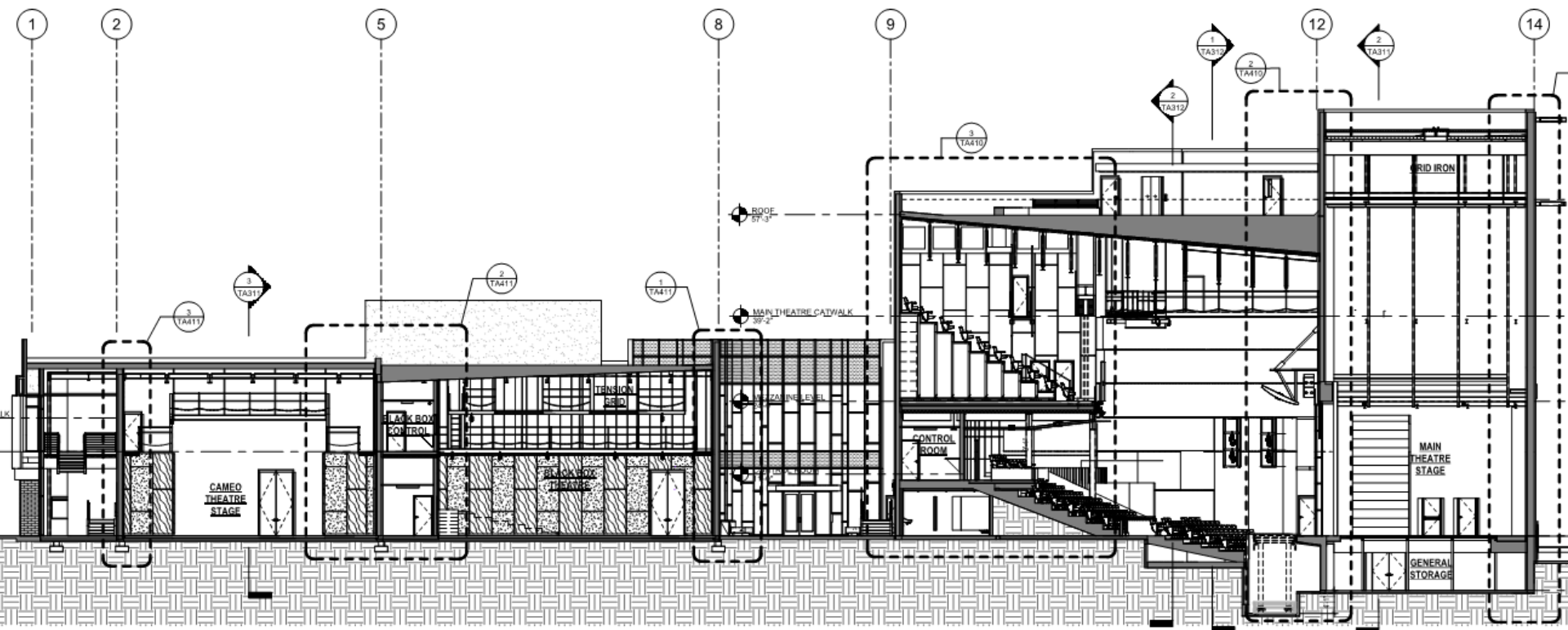
## THEATER ARTS - JCAF 31 2ND FLOOR LEVEL (F.E.E. 15'-0")



Finished Floor Elevation 24'-0"

ROOM TYPE	TOP CODE	JCAF 31 TOP Code Name	AREA
615 ASSEMBLY SERVICE	1007	DRAMATIC ARTS	1,807 SF
Grand total			1,807 SF

## THEATER ARTS - JCAF 31 REHEARSAL ROOM LEVEL (F.E.E. 24'-0")





jsfa

MAIN THEATER SEATING MODE 1&2



**jsfa**

**MAIN THEATER SEATING MODE 3: PROSCENIUM + LIFT+ REHEARSAL**





SERIES SEATING  
ARRIS





jsfa

MAIN THEATRE : PIT FILLER



jsfa

BLACKBOX OPTION 1 BLACK AND GREY



**jsfa**

**BLACK BOX THEATRE SEAT PLATFORMS**



jsfa

CAMEO THEATRE OPTION 1 BLACK AND WOOD



Thank You